



Cedar Ridge



CARYS

Houseman Custom Homes

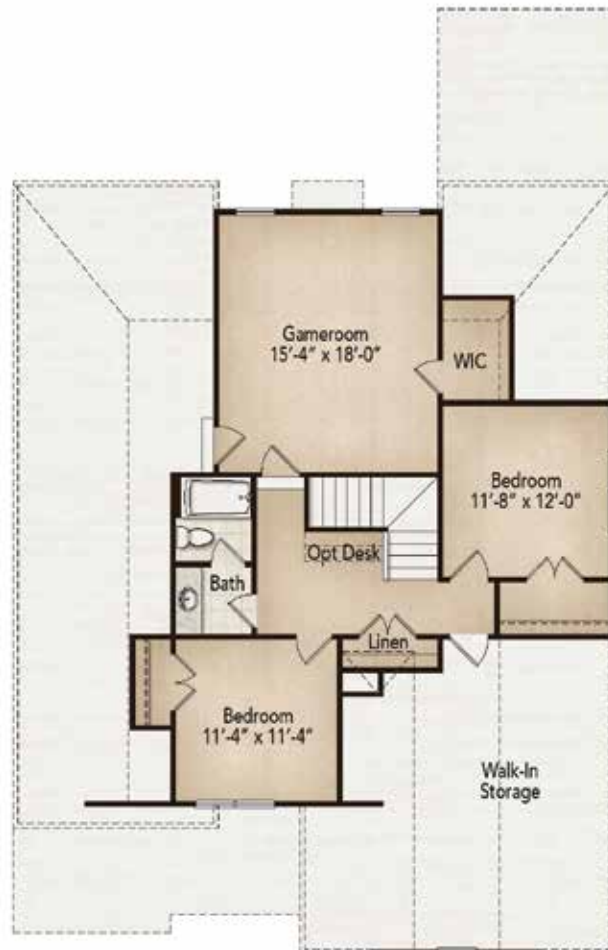
2,435 heated sf, 4 BR / 3 BA

First Floor Plan



CARYS
Houseman Custom Homes
2,435 heated sf, 4 BR / 3 BA

Second Floor Plan



Because we are continually improving our product, we reserve the right to revise or substitute features, architectural details or materials. Illustrations are for discussion purposes only and are not part of a legal contract. Square footages and room sizes are approximate. 7/18